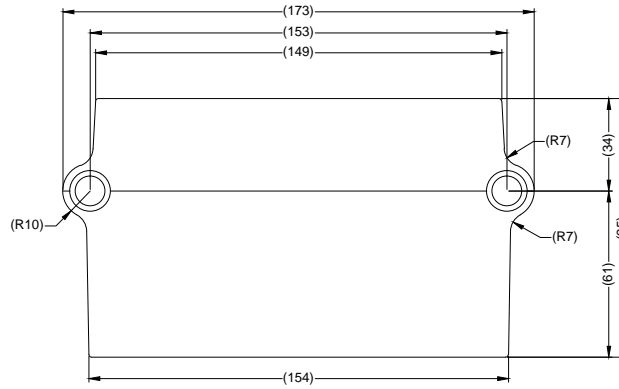


VIEW A

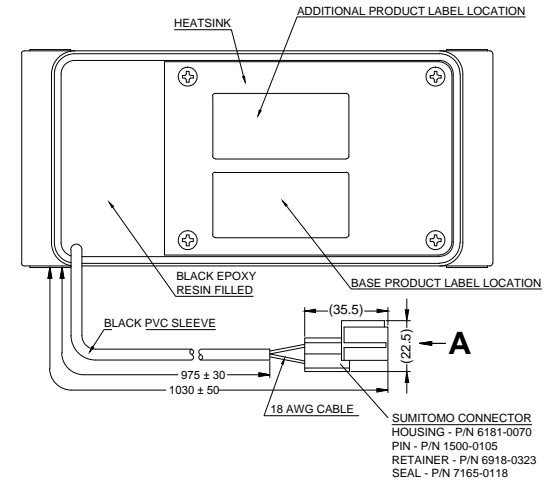
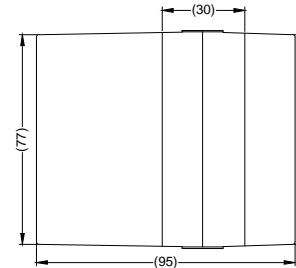
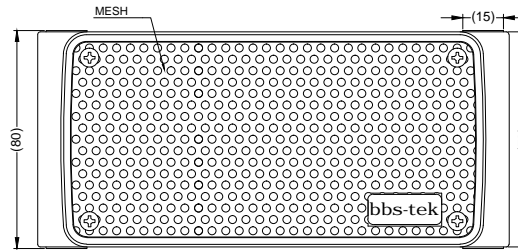
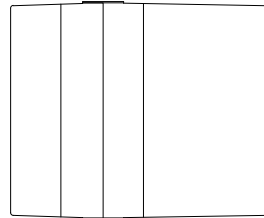
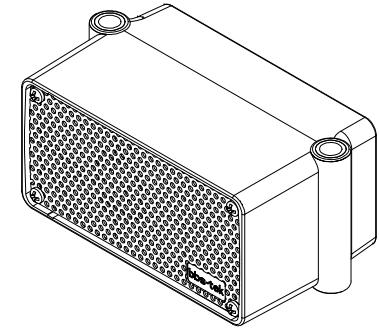


MATING FACE

PIN #	WIRE COLOUR	DESCRIPTION
1	RED	12-24VDC
2	BLACK	GROUND



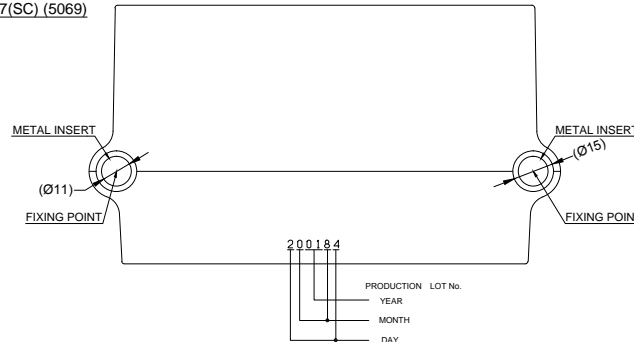
Revision Notes.				
R1 -				
APA:	Drawn:-	Checked:-	Approved:-	Date: -



CHANGES FROM BASE PRODUCT SA-BBS-107 (1400) TO SA-BBS-107(SC) (5069)

- CHANGE:
- 1/ BLACK PVC SLEEVE ADDED,
 - 2/ SUMITOMO CONNECTOR ADDED,
 - A) CONNECTOR HOUSING - 6181-0070.
 - B) CONNECTOR RETAINER - 6918-0323.
 - C) CONNECTOR TERMINAL - 1500-0105.
 - D) CONNECTOR SEAL - 7165-0018.
 - 3/ ADDITIONAL PRODUCT LABEL ADDED
 - 4/ REPLACEMENT GIFTBOX LABEL APPLIED

OPERATION: OPERATION IS SAME AS BASE PRODUCT



SPECIFICATION:

1. RATED VOLTAGE : 12-24 VOLTS DIRECT CURRENT (WORKING VOLTAGE RANGE 10THRU 32 VOLTS)
2. TEST VOLTAGE : 14-28 VOLTS DIRECT CURRENT
3. RATED CURRENT : 1 AMPERES OR LESS
4. SOUND PRESSURE AT TEST VOLTAGE : MAX 107±4dB(A) - MIN 87±4dB(A)
5. SOUND PRESSURE SELF-ADJUSTING : +5dB±4dB TO EXTERNAL NOISE
6. TONE: WHITE SOUND (BBS)
7. INTERMITTENCE: 70±10 CYCLES PER MINUTE AT TEST VOLTAGES
8. ENVIRONMENTAL TESTS: SAE J994.

NOTES:

1. FOR CONNECTOR DETAIL REFER TO MANUFACTURERS DETAILS.
2. FOR ADDITIONAL PRODUCT LABEL REFER TO THE LATEST REVISION OF DRAWING: BE-003331-XX-16 & TEMPLATE BE-003333-XX-16
3. FOR REPLACEMENT GIFTBOX LABEL REFER TO THE LATEST REVISION OF DRAWING: BE-003332-XX-16 & TEMPLATE BE-003334-XX-16.

PROPRIETARY NOTICE

THIS DESIGN AND TECHNICAL INFORMATION APPEARING ON THIS DRAWING IS THE PROPERTY OF BRIGADE ELECTRONICS, AND IS DISCLOSED IN CONFIDENCE. IT IS NOT TO BE COPIED, REPRODUCED, REVEALED TO OR EXPROPRIATED BY OTHERS, EITHER IN WHOLE OR IN PART WITHOUT THE EXPRESS WRITTEN CONSENT OF BRIGADE ELECTRONICS.



Assembly Pl Approval N.MEHTA (18/04/16)	Approved by B.CHILDS	Checked by M.POTTER	Drawn by D.RICHARDSON
Angle of Projection 	Units mm	Scale N/A	Released 20/04/16
Status RELEASED	Assembly Ref SA-BBS-107(SC)		
Part No 5069	BE-003330-00-16		